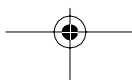
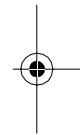
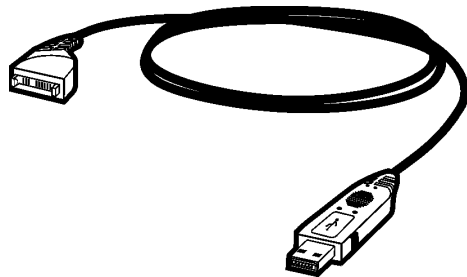
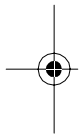




Nokia DKU-5 Data Cable Installation and Configuration Guide





Legal notices

Part No. 9355802, Issue No. 1
Copyright © 2002 Nokia. All rights reserved.
Nokia, Nokia Connecting People, and Nokia original accessories logos are trademarks or registered trademarks of Nokia Corporation. Printed in the USA December, 2002. Electronic document created December 16, 2002.

Reproduction, transfer, distribution, or storage of part or all of the contents in this document in any form without the prior written permission of Nokia is prohibited.

Nokia operates a policy of ongoing development. Nokia reserves the right to make changes and improvements to any of the products described in this document without prior notice.

UNDER NO CIRCUMSTANCES SHALL NOKIA BE RESPONSIBLE FOR ANY LOSS OF DATA OR INCOME OR ANY SPECIAL, INCIDENTAL, CONSEQUENTIAL, OR INDIRECT DAMAGES HOWSOEVER CAUSED.

THE CONTENTS OF THIS DOCUMENT ARE PROVIDED "AS IS." EXCEPT AS REQUIRED BY APPLICABLE LAW, NO WARRANTIES OF ANY KIND, EITHER EXPRESS OR IMPLIED, INCLUDING, BUT NOT LIMITED TO, THE IMPLIED WARRANTIES OF MERCHANTABILITY AND FITNESS FOR A PARTICULAR PURPOSE, ARE MADE IN RELATION TO THE ACCURACY, RELIABILITY OR CONTENTS OF THIS DOCUMENT. NOKIA RESERVES THE RIGHT TO REVISE THIS DOCUMENT OR WITHDRAW IT AT ANY TIME WITHOUT PRIOR NOTICE.

TRADEMARKS

Product names and/or brands mentioned herein are trademarks or registered trademarks of their respective holders.

EXPORT CONTROLS

This product contains commodities, technology or software exported from the United States in accordance with the Export Administration regulations. Diversion contrary to U.S. law is prohibited.

FCC/INDUSTRY CANADA NOTICE

Your phone may cause TV or radio interference (for example, when using a telephone in close proximity to receiving equipment). The FCC or Industry Canada can require you to stop using your telephone if such interference cannot be eliminated. If you require assistance, contact your local service facility. This device complies with part 15 of the FCC rules. Operation is subject to the condition that this device does not cause harmful interference.

***Tested To Comply
With FCC Standards
FOR HOME OR OFFICE USE***

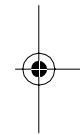
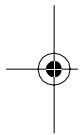
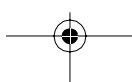
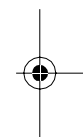
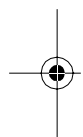




Table of Contents

1	Introduction	1
	Welcome	1
	Contents of the sales package	1
	Install software first	2
	Use your DKU-5 connection	2
	Locate additional information	3
2	Software/hardware installation	4
	Install the software	4
	Install the hardware	5
	Confirm installation	6
	Connect your phone	7
3	Contact Nokia	8





This device complies with Part 15 of the FCC Rules. Operation is subject to the following two conditions: (1) This device may not cause harmful interference, and (2) This device must accept any interference received, including interference that may cause undesired operation.

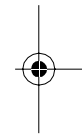
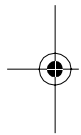


Warning: Changes or modifications to this unit not expressly approved by the party responsible for compliance could void the user's authority to operate the equipment.



Note: This equipment has been tested and found to comply with the limits for a Class B digital device, pursuant to Part 15 of the FCC Rules. These limits are designed to provide reasonable protection against harmful interference in a residential installation.

This equipment generates, uses and can radiate radio frequency energy and, if not installed and used in accordance with the instructions, may cause harmful interference to radio communications.



However, there is no guarantee that interference will not occur in a particular installation. If this equipment does cause harmful interference to radio or television reception, which can be determined by turning the equipment off and on, the user is encouraged to try to correct the interference by one or more of the following measures:

- Reorient or relocate the receiving antenna.
- Increase the separation between the equipment and receiver.
- Connect the equipment into an outlet on a circuit different from that to which the receiver is connected.
- Consult the dealer or an experienced radio/TV technician for help.



1 Introduction

• WELCOME

Thank you for your purchase of the Nokia DKU-5 Data Cable! You now have the ability to connect your compatible Nokia phone to your PC (desktop or laptop) using an available USB port.

SYSTEM REQUIREMENTS

In order to use this cable, you need:

- the Nokia software CD-ROM
- a compatible Nokia phone
- a USB-equipped Pentium-class PC or laptop computer
- Windows 98 (Second Edition), Windows Millennium Edition (ME), Windows 2000 Professional, or Windows XP (Home or Professional)




Warning: When connecting your phone or this cable to any other device, read the device's user guide for detailed safety instructions. Do not connect incompatible products.

• CONTENTS OF THE SALES PACKAGE

The DKU-5 Data Cable sales package contains the following items:

- DKU-5 Data Cable
- software CD-ROM
- installation guide
- warranty information

• INSTALL SOFTWARE FIRST

-  **Important:** The data cable software must be installed *before* you connect the cable for the first time. Only after the software has been installed can Windows successfully install and configure the cable.

The DKU-5 Data Cable requires software drivers in order to communicate with your PC and phone properly.

Please follow the instructions in this guide for proper installation of the software and cable.

• USE YOUR DKU-5 CONNECTION

Once the cable has been installed and configured by Windows, the following options are available:

USE NOKIA PC SUITE

Nokia PC Suite allows you to manage your phone's settings, create new ringing tones or graphics, and synchronize your phone's data with some of the most popular PIM (Personal Information Management) applications.

PC Suite and all related modem software is provided to you free of charge and can be downloaded from the PC software downloads section of:

<http://www.nokia.com/us> (US)

<http://www.nokia.ca> (Canada)


USE YOUR PHONE AS A WIRELESS MODEM


Your phone can function as a wireless modem for use with your PC or laptop computer, depending on the types of digital data/fax services supported by your phone and wireless service provider.

You may be able to use your phone as a wireless modem to:

- access the Internet and browse the World Wide Web, send and receive e-mail, etc.
- remotely access corporate networks
- send and receive faxes

For those phones supporting high-speed packet data, the DKU-5 Data Cable provides the maximum bandwidth for data throughput.

 **Important:** The DKU-5 Data Cable software and hardware must be installed before installing PC Suite or performing the wireless modem installation.

 **Note:** Digital data/fax calls are available only if your network supports these features. A subscription to these services may be required. Internet access may also require a subscription to services from an internet service provider (ISP). Please check with your wireless service provider for more information.

• LOCATE ADDITIONAL INFORMATION

For more information on PC Suite and wireless modem installation and configuration, please refer to your phone's *PC Suite User Guide and PC/PDA Connectivity Guide*. This document can be downloaded from the PC software downloads section of:

<http://www.nokia.com/us> (US)

<http://www.nokia.ca> (Canada)

2 Software/hardware installation

Before you can use the DKU-5 Data Cable (also known as Nokia Connectivity Cable DKU-5), you must install the necessary software and drivers for use by Windows Plug and Play.

The Nokia software installation program loads the correct device drivers and software. These files are used by Windows to configure your system automatically the first time you connect the cable.

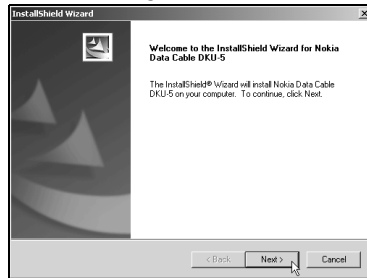
• INSTALL THE SOFTWARE

Please make sure no other applications are running.

- 1 Insert the Nokia CD-ROM into your computer's drive.
- 2 Select the software installation option from the CD's menu.

If the Nokia CD's menu does not appear or your CD-ROM drive's autorun option is disabled, double-click **index.htm** (found on the CD-ROM).

- 3 Click **Next** to begin the software installation.

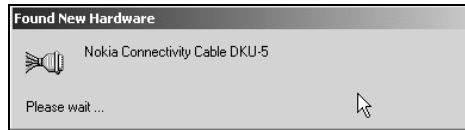


- 4 Click **Finish** to complete the software installation. Windows 98/ME users, please reboot your computer when prompted to complete installation.

• INSTALL THE HARDWARE

After you have performed the software installation as described earlier, please connect *only* the DKU-5 Data Cable to your PC's available USB port.

Windows automatically detects the data cable when you connect it for the first time. Windows installs the cable and also configures a *virtual communications port* for use by the data cable.



FOR WINDOWS 98/ME USERS

Windows 98 and ME locates the drivers and software that you previously installed and completes the hardware installation automatically.

FOR WINDOWS 2000 USERS

Windows 2000 automatically locates the drivers and software that you previously installed. During the installation process, the **Digital Signature Not Found** message may be displayed.

Please click **Yes** if this dialog box is displayed to complete the hardware installation.

FOR WINDOWS XP USERS

When the cable is detected, Windows XP activates the **Found New Hardware Wizard** to assist you with the installation of both the cable adapter and the virtual COM port.

Complete the installation wizards for both devices, clicking **Continue Anyway** if the Windows logo error message is displayed.

• CONFIRM INSTALLATION

Use Windows **Device Manager** to confirm that the DKU-5 Data Cable has been installed properly.

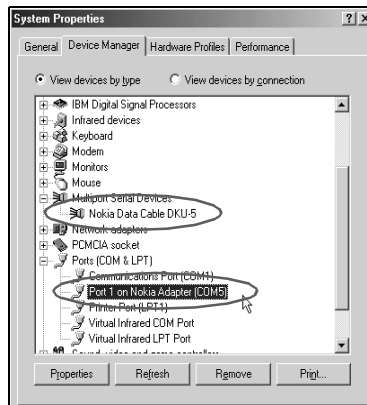
Also, please make note of the virtual COM port number assigned to the DKU-5 Data Cable. This information may be required when configuring your data/fax software, or when installing Nokia PC Suite.

ACCESS WINDOWS DEVICE MANAGER

To access your computer's Device Manager, double-click the **System** icon located in the **Control Panel**. Then follow the instructions below for your operating system.

WINDOWS 98/ME

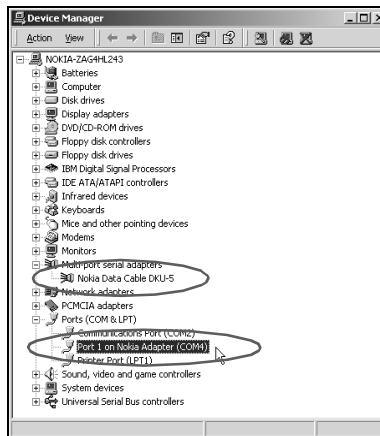
Click the **Device Manager** tab on the **System Properties** window.



Example: Windows 98 and Me

WINDOWS 2000/XP

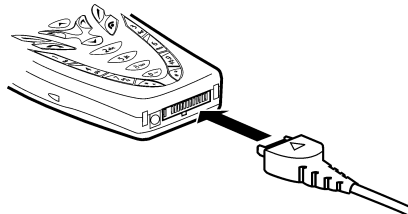
Click the **Hardware** tab, then click the **Device Manager** button.



Example: Windows 2000 and XP

• CONNECT YOUR PHONE

Once you complete the DKU-5 Data Cable software and hardware installation, you can connect your phone to the cable.



If the Windows **Add New Hardware Wizard** begins when you plug the phone into the cable, please refer to your phone's *PC Suite User Guide and PC/PDA Connectivity Guide* for installation instructions.

Consult your phone's user guide for safety and operating instructions.

3 Contact Nokia

Nokia Customer Care

Customer Care Center, USA	Nokia Mobile Phones 7725 Woodland Center Blvd., Suite #150 Tampa, Florida 33614 Tel: 1-888-NOKIA-2U (1-888-665-4228) Fax: 1-813-249-9619 TTY/TDD Users Only: 1-800-24-NOKIA (1-800-246-6542)
Customer Care Centre, Canada	Nokia Products Ltd. 601 Westney Road South Ajax, Ontario L1S 4N7 Tel: 1-888-22-NOKIA (1-888-226-6542) 1-905-427-1373 Fax: 1-905-427-1070

Register your accessory

Make sure to register your DKU-5 Data Cable at www.warranty.nokiausa.com or 1-888-NOKIA-2U (1-888-665-4228) so that we can serve your needs better if you should need to call the center or have your cable repaired. (US customers only)

E-newsletters

When you register your data cable, you can sign up for Nokia's e-newsletter *Nokia Connections* if you would like. You will receive tips and tricks on using your phone, accessory information, and special offers. (US customers only)